



# Spirit MATTERS

Newsletter for CSCPF Members and Friends



CENTER for SPIRITUAL CARE & PASTORAL FORMATION  
EMPOWERING PEOPLE, NOURISHING COMMUNITIES

October 2016 - Vol. 9

## CSCPF NEWS

### Fiduciary Council Election Results

Thank you to everyone who voted in the recent election of four new Fiduciary Council Members.

64 ballots were cast for six candidates. The four candidates who received the most votes will join the existing members of the Fiduciary Council and the remaining two will become alternate members.

The CSCPF Community welcomes the following individuals to the Fiduciary Council and offers gratitude for their willingness to be of service to our Organization.

#### The four newly elected members of the Fiduciary Council are:

Allison Cornell  
Liz Munns  
Susan Barton  
Doug Boyle

#### *This issue:*

- New Fiduciary Council Members Elected
- Register Now for the Fall Gathering!
- The Role of Spiritual Direction in Clinical Chaplaincy



#### **MONTHLY MEETING SCHEDULE:**

**Program Council:  
3rd Thursday evening**

**Alternate members:**

Richard Bristol  
Victoria Grasmick

**Fiduciary Council:**  
**4th Thursday evening**

**Governance Team:**  
**4th Tuesday evening**

**Communications Team:**  
**4th Thursday evening**

**Fiduciary Council for 2016-2017:**

**Members:**

Elaine Barry  
Susan Barton  
Paula Belleggie  
Doug Boyle  
Allison Cornell  
Katie LeCount  
Liz Munns  
Aimee Niles  
Don Oyao  
Rebecca Williams  
Katrina Yap

**Alternate Members:**

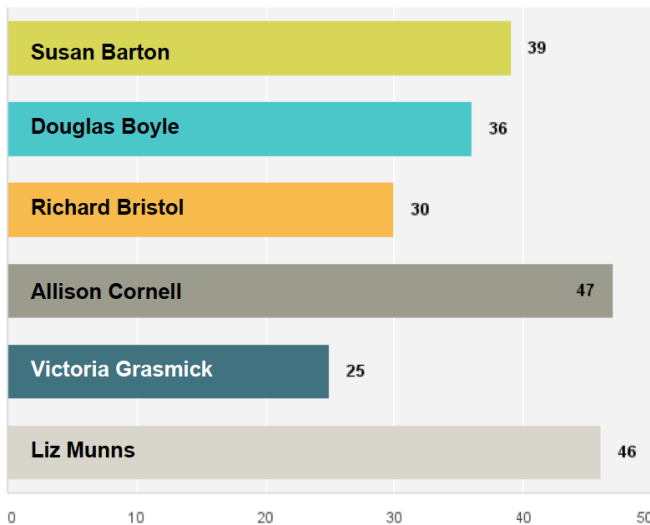
Richard Bristol  
Victoria Grasmick



**CSCPF welcomes your participation on any of our Functional Teams.**

**Please contact the team leader of any team and let him/her know you are interested in serving!**

**Vote Tally for Each Candidate**



**CONGRATULATIONS!**

**Certification/Standards**

Rebecca Williams  
*revrebbie@gmail.com*

**Communications**

John Jeffery  
*john@pacinstitute.org*

**Accreditation**

CJ Malone  
*cjmalone@gmail.com*

**Ethics**

Don Oyao  
*donoyao1949@gmail.com*

**Events**

Paula Belleggie  
*revpmb@slcet.org*

## Oh No! No Room at the Inn?

The CSCPF Gathering in Scottsdale, AZ is October 30<sup>th</sup> through November 2<sup>nd</sup>. **However, all LODGING reservations must be made by THIS FRIDAY, October 14<sup>th</sup>, or there may be 'no room at the inn.'** We must turn in a list of all lodging arrangements and all requested meals to the Franciscan Retreat Center by this Friday, so the deadline for making your reservations (if you want a room guaranteed) is right now!

It's simple to do. Go to [www.CSCPF.org](http://www.CSCPF.org). Click on **EVENTS** button. Register for the 2016 Fall Gathering. Within the registration form you'll see where you can check the nights you need lodging, and the meals that are included with each night (dinner, breakfast, and lunch). Complete your registration and this lodging information will then be available for us to give to the Retreat Center's staff.

## Don't Need Lodging but Want Meals?

Further down on the registration form there is a place to indicate **Meals Only**. Check which meals you wish to eat at the Retreat Center, and you'll be charged accordingly. This is especially convenient for those of you from the Phoenix/Scottsdale area who plan to commute from home daily. 'Day Use' commuters MUST purchase meals if they wish to eat in the dining hall with other participants. Or you are welcome to bring your own food to eat at a picnic table.

**Call to Action:** Make your lodging and meal reservations TODAY, right now. Don't delay!!

If you have any questions about the CSCPF Fall Gathering, please contact **Rebecca Williams at (510) 485-6654 or email JJ Pooley at [events@cscpf.org](mailto:events@cscpf.org)**.

~~~~~

# CSCPF

## 'FALL GATHERING'

Sun, October 30 - Wed, November 2, 2016

### Membership

Wendy Jones  
[revmommy@yahoo.com](mailto:revmommy@yahoo.com)

### Fiduciary Liaison

Roy Sanders  
[president@cscpf.org](mailto:president@cscpf.org)

### Program Council Convener

Katie LeCount  
[katielecount@sbcglobal.net](mailto:katielecount@sbcglobal.net)

---



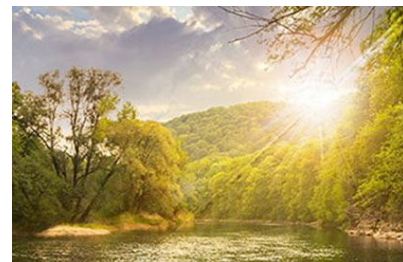
## SUPPORT US!

*CSCPF offers a relational, inclusive and personalized approach to spiritual care while encouraging growth in the wisdom, knowledge and skills needed for the 21st century.*

*We need and appreciate your financial support.*

*You can **SUPPORT US!** via our website.*

---



**at "The CASA"  
Franciscan Renewal Center  
Scottsdale, Arizona**

**You Will Be a Big Fish in a Small Pond**

Some conferences draw hundreds to thousands of attendees, with little-to-no personal involvement or contribution. But at the CSCPF Fall Gathering in Scottsdale (Oct. 30-Nov. 2), you're guaranteed to be a big fish in a small pond. This intimate gathering of Chaplains, Spiritual Counselors, and other spiritual care providers gives you the opportunity to be heard! Bring your questions. Bring your concerns. Bring a topic that you've wished you could discuss with other peers. We want your involvement.

There is a dynamic program planned, with exceptional speakers and presenters, but there is also much room for spontaneity. Small group meetings in the afternoon form organically, based on the interest of the attendees. So, if you have something in mind, bring it up for discussion.

You are also welcome to bring resources and handouts that will be placed on a table for distribution to the other attendees.

We look forward to your involvement, your active participation, and your voice!

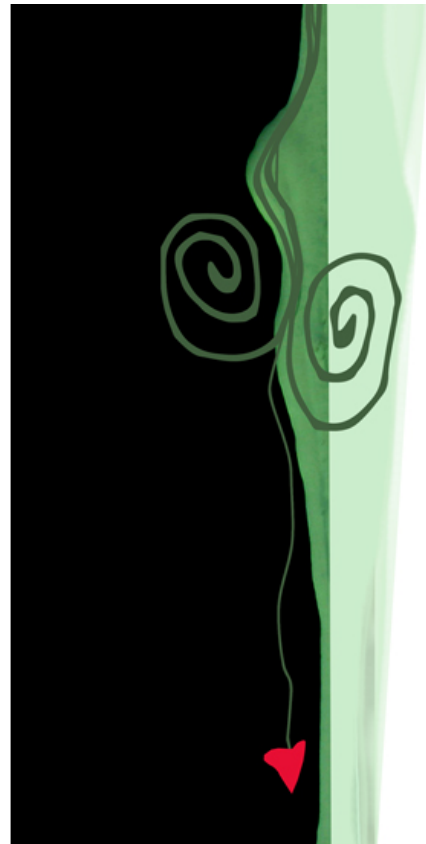
**Schedule for the FALL GATHERING**

**JOIN US!**

*We value relationship, and participation is a way of establishing a relationship with colleagues and the discipline of spiritual care in general.*

*We invite you to join as an individual member and then find and become an active member in a local Practitioner Community. Another option is for you to establish your own Practitioner Community with a few other colleagues from your work place or your community.*

*More information can be found on our **JOIN US!** page.*



|       | Monday                                                                                                                                                                   | Tuesday                                                                                                                                                                                            | Wednesday                                                                                                                     |
|-------|--------------------------------------------------------------------------------------------------------------------------------------------------------------------------|----------------------------------------------------------------------------------------------------------------------------------------------------------------------------------------------------|-------------------------------------------------------------------------------------------------------------------------------|
| 7:00  | Outdoor Movement, Meditation or Spiritual Practice - Labyrinth                                                                                                           | Outdoor Movement, Meditation or Spiritual Practice - Labyrinth                                                                                                                                     | Outdoor Movement, Meditation or Spiritual Practice - Labyrinth                                                                |
| 8:00  | Breakfast                                                                                                                                                                | Breakfast                                                                                                                                                                                          | Breakfast                                                                                                                     |
| 9:00  | Opening Ritual/Centering (Buddhist Based) – Susan Shannon                                                                                                                | Opening Ritual/Centering (Greek Orthodox Based) – Dee Jacquet                                                                                                                                      | Opening Ritual/Centering (Judaism Based) – Grace Hartman                                                                      |
| 9:15  | Chaplaincy at End-of-Life: Symptom Management/Impact at End of Life (Denise Sanders)                                                                                     | Community Chaplaincy: Death Row & Prison Chaplaincy (Susan Shannon)                                                                                                                                | Outcome-based Chaplaincy: Documenting the Value of Spiritual Care to Patients; New Charting Template; Hospital Administration |
| 9:45  | ↓                                                                                                                                                                        | Community Chaplaincy: A Chaplain's Street Retreat for the Homeless (Don Oyao)                                                                                                                      | ↓                                                                                                                             |
| 10:15 | Chaplaincy@End of Life: Life Review Using Google Earth (Allison Cornell)                                                                                                 | Community Chaplaincy: Spiritual Care for Addictive Disorder Treatment (Jack Abel)                                                                                                                  | Pack and check out of rooms                                                                                                   |
| 10:45 | Break                                                                                                                                                                    | Break                                                                                                                                                                                              | Break                                                                                                                         |
| 11:00 | Chaplaincy@End of Life: Interactive Panel (Denise Sanders, Allison Cornell, Deb Morwood +)                                                                               | Community Chaplaincy: Interactive Panel Discussion (Don Oyao, Jack Abel +)                                                                                                                         | Outcome-Based Chaplaincy Panel Discussion<br>Labyrinth/Prayerful Contemplation & Release                                      |
| Noon  | Lunch                                                                                                                                                                    | Lunch                                                                                                                                                                                              | Lunch                                                                                                                         |
| 1:15  | President's Report                                                                                                                                                       | CSCPF Strategy & Planning Mtg                                                                                                                                                                      |                                                                                                                               |
| 2:45  | Break                                                                                                                                                                    | Break                                                                                                                                                                                              |                                                                                                                               |
| 3:00  | Lightening Round Topics:<br>1. Essential Conversations (Barbara McGuire & John Jeffery)<br>2. Ethics of Physician Assisted Suicide (Don Oyao)<br>3. Topic from the Floor | Lightening Round Topics:<br>1. Spiritual Direction and Clinical Chaplaincy (Dee Jacquet & John Jeffery)<br>2. Chaplaincy with Transgender and LGBTQ Persons (JJ Pooley)<br>3. Topic from the Floor |                                                                                                                               |
| 4:30  | Certification Panels (for those participating)                                                                                                                           | Certification Panels (for those participating)                                                                                                                                                     |                                                                                                                               |
| 6:00  | Dinner                                                                                                                                                                   | Dinner                                                                                                                                                                                             |                                                                                                                               |
| 7:15  | OPTIONAL EVENING ACTIVITY: Two Spirits or Chat Room                                                                                                                      | OPTIONAL EVENING ACTIVITY: Movie or Chat Room                                                                                                                                                      |                                                                                                                               |

“to allow the sorrow and weight of life  
and yet to dance with an easy and open heart.  
to ache in your darkest depths and yet to laugh from your light filled center.  
to know the reality of humanity and yet to believe in the magic of the stars.  
to act with love in the middle of the fear and to hold each moment as the gift that it is.  
this is the challenge of living.”

-- terri st.cloud

[BoneSighArts.com](http://BoneSighArts.com)

BoneSighArts.com and Terri St Cloud have generously offered her work to support and inspire us!  
Thank you Terri for gracing our organization with your Spirit. Go to [BoneSighArts.com](http://BoneSighArts.com) and be inspired by this amazing woman!

## ***The Role of Spiritual Direction in Clinical Chaplaincy: Workshop at the 2016 Fall Gathering***

The scope of service for CSCPF includes the discipline of Spiritual Direction. We hope this open forum offered at the Fall Gathering will clarify our vision and goals for Spiritual Director Formation Training and peer supervision.

This would include values and competencies, resources, curricula, and a sample structure for training and peer review which could be made available to our Training Centers.

The facilitators, John Jeffery and Dee Jacquet, will offer conversation starters. Attendees are asked to bring any relevant resources, bibliographies, curriculum models, syllabi, ideas, experiences and insights to help develop and actualize this rich potential of compassion within CSCPF.

We are looking for a working group to identify itself to coordinate further implementation. This workshop will be

held Tuesday afternoon at the Fall Gathering.

## **Spiritual Care Association Discussion at the Fall Gathering**

If you are attending the Scottsdale Gathering you are welcome to attend an informal meeting to learn about and discuss the Spiritual Care Association (SCA). SCA is a new organization in our professional community which is generating interest, questions and commentary. Meeting time and location will be announced at the Gathering.

Copyright © 2016 CENTER for SPIRITUAL CARE & PASTORAL FORMATION.

All rights reserved. Contact email: [Logistics@CSCPF.org](mailto:Logistics@CSCPF.org)

[Facebook](#) | [Twitter](#) | [Unsubscribe](#)

You are receiving this message because you opted in at CSCPF.org