



# Spirit MATTERS

Newsletter for CSCPF Members and Friends



CENTER for SPIRITUAL CARE & PASTORAL FORMATION  
EMPOWERING PEOPLE, NOURISHING COMMUNITIES

February 2016 - Vol. 5

## Notes from CSCPF's President!



One of the goals for the President of CSCPF is membership expansion. Collaborating with the Membership Team I dream of expanding the CSCPF membership to 233 members by December 31, 2016. One of my roles in this dream is to consistently remind the Community of the number 233, (an arbitrary number actually).

Where did this number come from? Well, here is the back story. Years ago, when I was a parish pastor I read a story about a South Korean church pastor who used a scripture passage to encourage church growth, (obviously this is a Christian perspective, there may be similar non-Christian thought). The passage the pastor used was James 4:3, which reads, "you have not because you do not ask. When you do ask, you do not receive because you ask with unclear motives . . ."

The pastor went on to say that "unclear" motives can mean unspecific. So he declared that to grow the church they were going to be specific in their desires. Each year the church decided on a number and that number would be included on every printed document. Within ten years the church grew from a membership of a couple hundred to several thousand members. On the one hand simply printing a number was only a small part, and on the other it was a large contributing factor. For ten years a specific number was put "out to the Universe (God)" and the Universe conspired with the

### *This issue:*

- Notes from CSCPF's President
- CSCPF Areas of Focus 2016
- Certification Webinar + More!



## MONTHLY MEETING SCHEDULE:

**Program Council:**  
**3rd Thursday evening**

**Fiduciary Council:**  
**4th Thursday evening**

**Governance Team:**  
**4th Tuesday evening**

congregation to reach that specific number. Seeing the number was a constant reminder of one GOAL of the congregation.

I picked up that idea, and in the last 27 years or so practiced specific prayer. How will I know if my 'ask' is answered, yes or no, unless I ask specifically? That's my story. I arbitrarily picked 233 as a specific number to reach by the end of 2016, I talked briefly to the Program Council, even asking for any different number. The PC agreed to use 233 as the number of paid individual members, not Learning Centers, Practitioner Communities, or Serving Sites. These persons can be certified or not; they must be dues paying members.

Every document I write from now until December 31, 2016 will include 233 in my signature line. I request that every newsletter, and other mass communication to include the number 233; either in the header or footer to remind you, the member, that membership expansion is everyone's responsibility.

My ask is "Will you invite a spiritual care provider or spiritual counselor to join CSCP and help us become the Community of Communities we set out to be on September 5th in 2014"?

In Peace,

**Roy Sanders** (233)

---

## 2015 CSCP Annual Report

The Annual Report for 2015 was published in early February. If you did not get your copy in your email, you can access the Report from the [home page of the CSCP Website](#).

## CSCP's Areas of Focus for 2016

At the end of January, the Program Council held its monthly meeting. This gathering enjoyed the highest attendance of any previous Program Council meeting!

During the meeting the Council discussed and named a number of intentions, goals and areas of focus for CSCP in 2016. The list is both specific and global in nature, representing how our organization still has many organizational details to resolve while also maintaining commitment to our core values and vision.

The minutes of the Program Council are available to read in the members section of the Website.

## 2016 Areas of Focus

### **Communications Team: 1st & 3rd Thursday evenings**



**CSCP welcomes your participation on any of our Functional Teams.**

**Please contact the team leader of any team and let him/her know you are interested in serving!**

#### **Certification/Standards**

Frank Munoz  
[francisco.munoz@pvhmc.org](mailto:francisco.munoz@pvhmc.org)

#### **Communications**

John Jeffery  
[john@pacinstitute.org](mailto:john@pacinstitute.org)

#### **Accreditation**

CJ Malone  
[cjmalone@gmail.com](mailto:cjmalone@gmail.com)

#### **Governance Development**

Andrew Harriott  
[revandrewharriott54@gmail.com](mailto:revandrewharriott54@gmail.com)

#### **Ethics**

Don Oyao  
[donoyao1949@gmail.com](mailto:donoyao1949@gmail.com)

#### **Events**

Paula Belleggie  
[revpmb@slcet.org](mailto:revpmb@slcet.org)

#### **Membership**

Wendy Jones  
[revmommy@yahoo.com](mailto:revmommy@yahoo.com)

#### **Fiduciary Liaison**

Roy Sanders

- Place greater organizational emphasis upon the clinical practice of spiritual and pastoral care.
- Humanize the roles and functions among the membership and increase the integrity of relationships with one another.
- Provide higher and deeper levels of interpersonal connection and increased opportunities for relationship building and nurture of one another.
- Have 233 members by the close of 2016.
- ASPA membership.
- Continued development and training of Commissioned Review Liaisons.
- Organize events around relationships and continuing education rather than business.
- Enlist and affirm a Finance Team.
- Offer online training for members of the Accreditation Visit Teams.

*president@cscpf.org*



## **SUPPORT US!**

CSCPF offers a relational, inclusive and personalized approach to spiritual care while encouraging growth in the wisdom, knowledge and skills needed for the 21st century.

We invite you, if you are so moved, to try out our new **SUPPORT US!** page via the website.

We need to ensure that it is functioning properly, so if you are considering a donation, please give it a try.

## **Upcoming Events**

### **CERTIFICATION WEBINAR**

**MARCH 31st, 2016**

Two meeting times are available:  
**2:00 – 3:30 pm PT or 5:30 – 7:00 pm PT**

#### **Are you contemplating certification with CSCPF?**

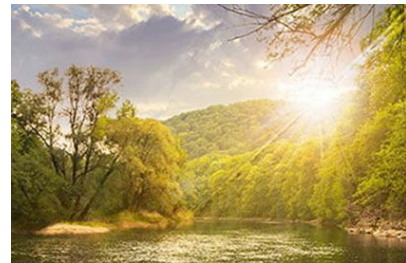
- Is your Practitioner Community wondering how to support the certification process for your members?
- Do you just have questions about CSCPF's certification process and what makes it unique?

Then plan on attending the Certification Webinar on March 31, 2016. Two meeting times are available: 2:00 – 3:30 pm PT or 5:30 – 7:00 pm PT.

A presentation will be made by Frank Munoz (CertificationTeam Leader) and John Jeffery (Program Council) about the Certification Process and how the candidate, practitioner communities and commissioned review liaisons work together for certification.

Ample time will be allotted for questions and discussion.

If you wish to attend this event, please email [mary.makrisworks@gmail.com](mailto:mary.makrisworks@gmail.com) and ask to be placed on the invitation list. You will receive an email invitation with information about how to join the Webinar.



## **JOIN US!**

We value relationship, and participation is a way of establishing a relationship with colleagues and the discipline of spiritual care in general.

So we invite you to join as an individual and find a Practitioner Community or you may also establish your own Practitioner Community with a few other people.

# CSCPF Fall Gathering

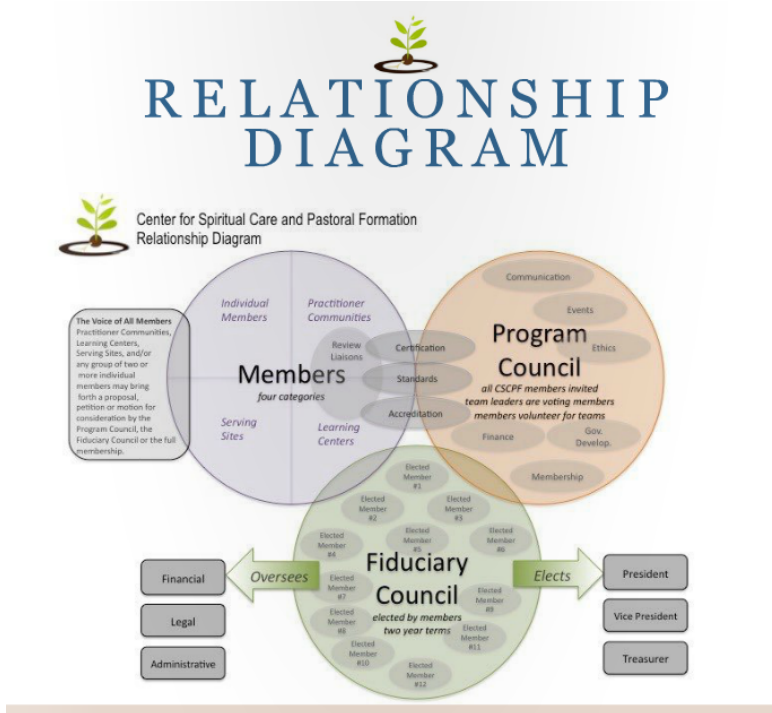
The 2016 Fall Gathering is being planned for the end of October or first part of November.

This will be a major event for CSCPF and is tentatively being planned for the East Coast region. We expect details about dates and location to be available shortly and you will receive an email announcement. The intention for 2016 is to have one large gathering in the Fall thus we will not have a Spring event in 2016.

More information can be found on our [JOIN US!](#) page.



## RELATIONSHIP DIAGRAM



## maps

by Terri St Cloud  
[BoneSighArts.com](http://BoneSighArts.com)

*there is no map.*

*you gotta write your own.*

*you gotta carve your own.*

*you gotta sweat, cry, grieve,*

*laugh, and love your own.*

*and when you're all done,*

*that's all that will have  
mattered.*

BoneSighArts.com and Terri St Cloud have generously offered her work to support and inspire us! Thank you Terri for gracing our organization with your Spirit. Go to [www.BoneSighArts.com](http://www.BoneSighArts.com) and be inspired by this amazing woman!

Copyright © 2016 CENTER for SPIRITUAL CARE & PASTORAL FORMATION.  
All rights reserved.  
Contact email: [Logistics@CSCPF.org](mailto:Logistics@CSCPF.org)

[Facebook](#) | [Twitter](#) | [Unsubscribe](#)

You are receiving this message because you opted in at CSCPF.org