



CENTER for
SPIRITUAL CARE and
PASTORAL FORMATION

ANNUAL REPORT 2017



CONTENTS

*Welcome –
The President’s Message*

The Program Council

The Fiduciary Council & Officers

Communities

CSCPF-Accredited Learning Centers

Practitioner Communities

Relationships

Financial Report



WELCOME

*Welcome to the Annual Report of the
CENTER for SPIRITUAL CARE and PASTORAL FORMATION.
Please review the information in this report and witness the journey we
have undertaken as a Community over the past twelve months.*

GREETINGS from CSCPF's PRESIDENT

Happy New Year!

As we enter into 2018, the 4th year of our incarnation, I look forward to what this year will hold for us as an organization. In such a short time, we have had an incredible amount of maturation and growth. I believe that the momentum generated just this last year in the form of new leadership, increased participation on Functional Area Teams, and new memberships has energized us and will carry over into this new year.

In 2018, we will continue to work on the goals we set forth for ourselves last year in the areas of **Growth**, **Connectivity** and **Support** for all members and Practitioner Communities. Of particular focus this year for Leadership will be the focused outreach to our all Practitioner Communities, to foster connection and empowerment.

I welcome each Practitioner Community member and Liaison to participate in our bi-monthly Program Council meeting, led by Eileen Phillips, our Program Council Convener.

In our grassroots organization, it is your voices, your insights and participation that is critical to the maintenance of our commitment to our collective CSCPF vision.

To be notified of upcoming Program Council meetings, please email CSCPF-ProgramCouncil@cscpf.org.

Our Fall Gathering will once again be the highlight of our year, this time it will be held on the East Coast, at the Bon Secours Retreat Center outside of Baltimore, MD. The theme will be **Connection**. Our Events Team is currently building the program for the event, and would welcome your participation. Please email CSCPF-Events@cscpf.org for more information.

I hope you have seen and experienced the increased functionality of our website and felt a greater presence of leadership overall this past year. While we did have some stumbles here and there I believe that from each misstep we've grown a bit wiser about our process and ourselves.

May 2018 provide us ample opportunity to shine brightly and further realize our call to spiritual service in the world.

Yours in service,

Rev. Lilliana (Lily) Godsoe, President, CSCPF



We are a diverse community who find our common ground in providing high quality spiritual and pastoral care services to those we serve.

Practitioner Communities provide peer support, professional development and lifelong collegial relationship.

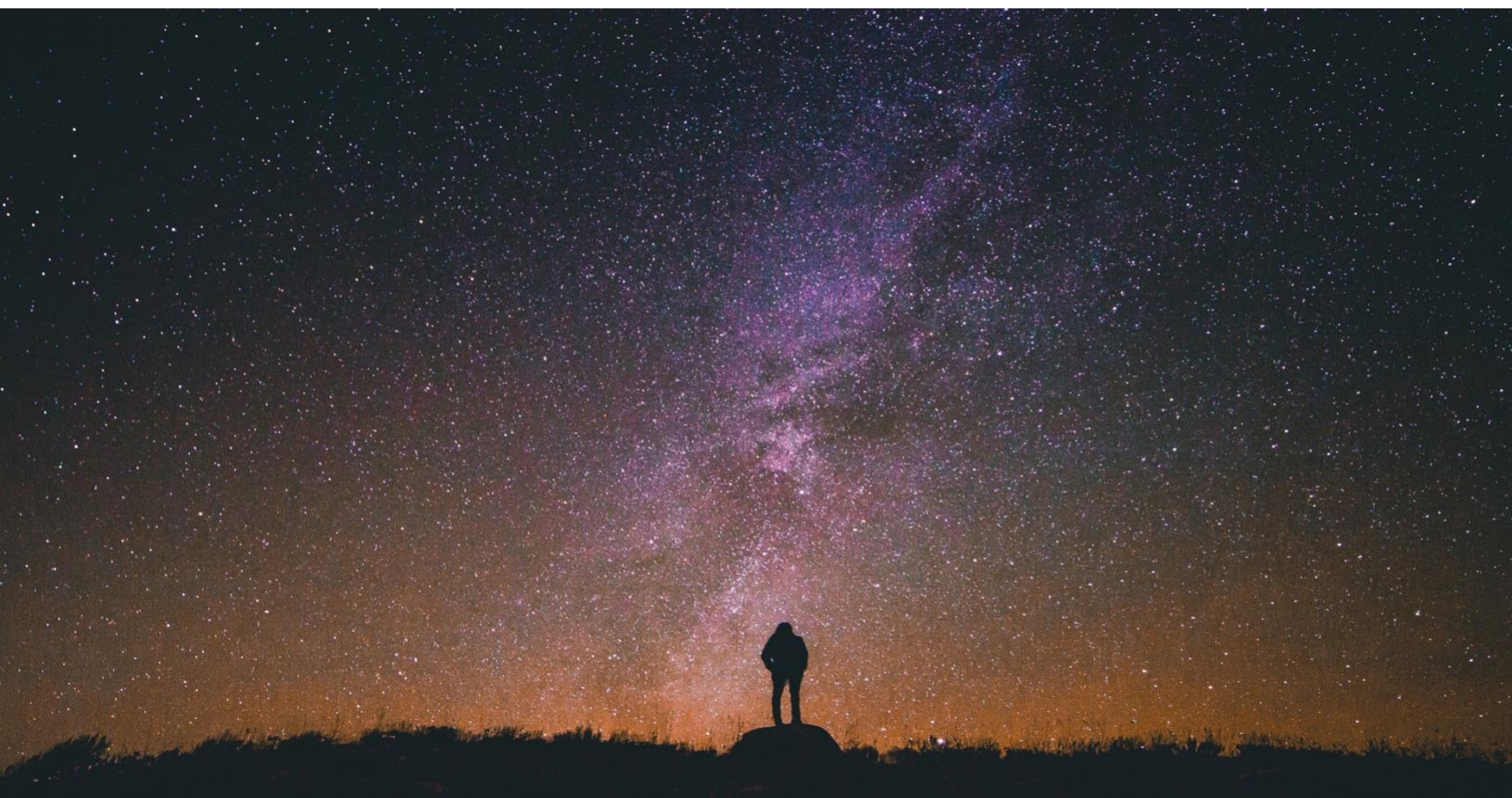


CSCPF accredits Learning Centers that conduct Clinical Pastoral Education and Formation for those seeking professional certification or enhancement of spiritual care skills.

We recognize the importance of new expressions of care and new voices of spirit in the practice of our profession in the 21st century.



I recognize that remarkable and miraculous transformations happen when I work to create a community of honest engagement that fosters an individual as well as the community's self-awareness.



*The Program Council - Functional Area Team Leads**

**as of 1.1.2018*

**Program Council Convener/
Practitioner Community Lead**
Eileen Phillips

Accreditation
Roy Sanders

Advancement
Jack Abel

Advocacy
Position Open

Certification & Standards
Rebecca Williams • Edee Charlton

**Commissioned Certification Review
Liaison Lead**
Michael "Hoss" Benedict

Communications
John Jeffery • Allison Cornell

Ethics
TBD

Events
Barrett Van Buren • Hilde Brooks

Finance
Jack Abel

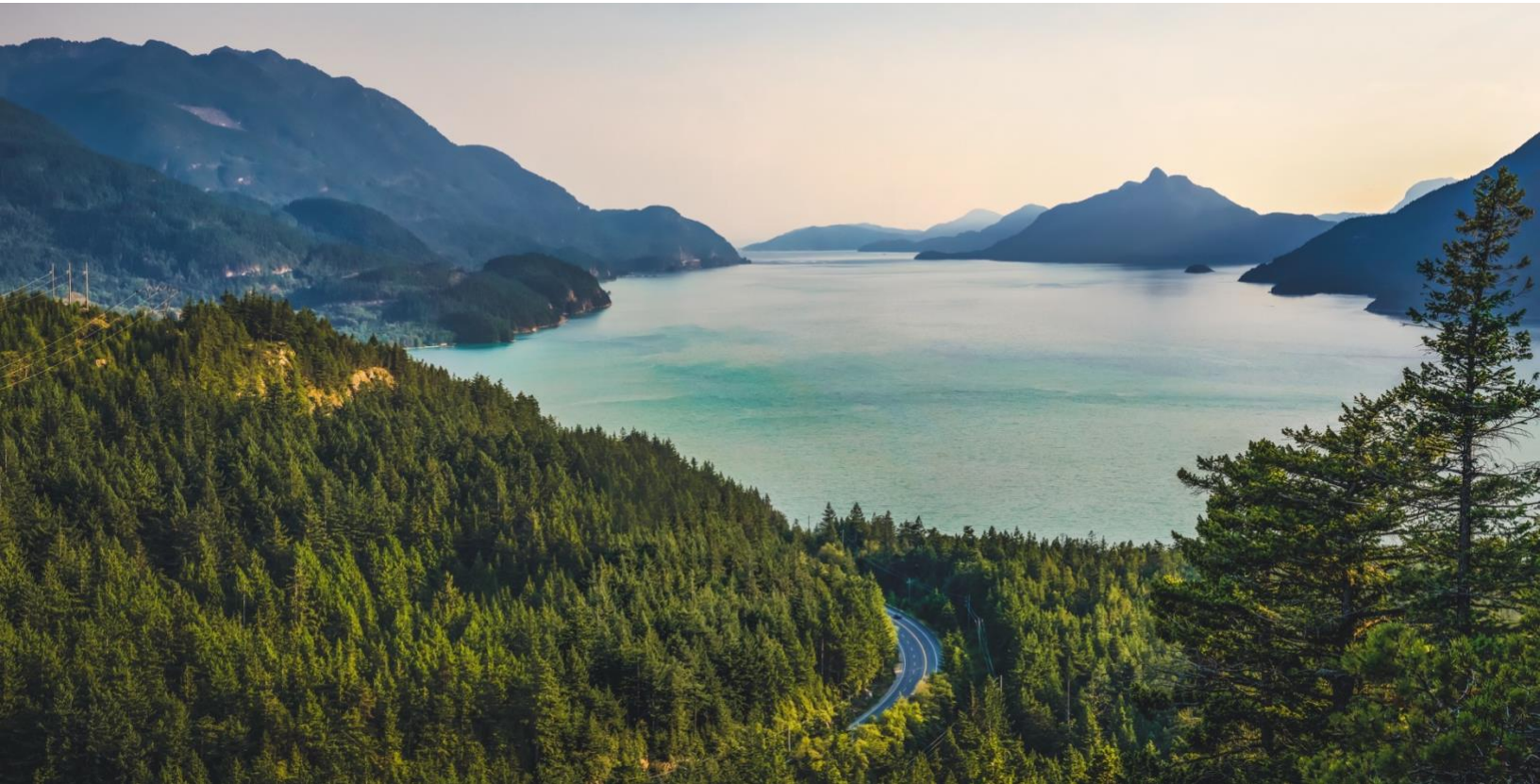
Joint Council Liaison
Selene Seltzer

Membership
Barbara McGuire

Operations
Lily Godsoe • Debra Morwood • Selene Seltzer

Spiritual Care
Katie LeCount

*I am dedicated to offering transformative and healing education and spiritual care
to practitioners in the world community.*



*The Fiduciary Council**

**as of 1.1.2018*

CSCPF Officers

Lilliana Godsoe, *President*

Katie LeCount, *Vice President*

Debra Morwood, *Secretary*

Jack Abel, *Chief Financial Officer*

Position Open, *Treasurer*

Fiduciary Council Members

Richard Bristol

Allison Cornell

John Jeffery

Katie LeCount

Liz Munns

Aimee Niles

Don Oyao (*on leave*)

Rebecca Williams

Katrina Yap

I accept the profound place of trust that my community places in me.



CSCPF COMMUNITIES

*CSCPF-Accredited Learning Centers**

**as of 1.1.2018*

Pacific Institute for Essential Conversations (PIEC)

Supervisors: John Jeffery, Roy Sanders, Milt Hines, Greg Delort, Barbara McGuire, Bill Greaver
Contact: john@pacinstitute.org

SEFs:

Jack Abel (Caron Treatment Center)
Liz Munns (PIEC)
Susan Shannon (PIEC)

Affiliate Programs:

*Academy of Holistic Theology and Spirituality
Caron Treatment Center*

Rocky Mountain Center for Spiritual Caregivers

Supervisors: Wendy Jones, Dee Jaquet, Scott Hogue, Michael Benedict
Contact: rockymountaincpe@gmail.com

Spiritual Living Center for Education & Training

Supervisor: Paula Belleggie
Contact: cpe@slcet.org

Vanderpol Center for Leadership & Pastoral Formation, Inc

Supervisor: Dr. Maria Theresita Escandor-Sobremisana
Contact: dr.tootsie@vanderpolcenter.org

SEFs:

Katrina Mae A. Yap
Ronnel S. Domingo
Rev. Penelope Beatha D. Caytap

Affiliate Programs:

*Center for Pastoral Counseling & Crisis
Intervention
Episcopal Diocese of North Central Philippines*



I believe the foundational goal of our community is to build respect for the inherent worth, dignity, and quality of every individual in our diverse society.

*CSCPF Practitioner Communities**

**as of 1.1.2018*

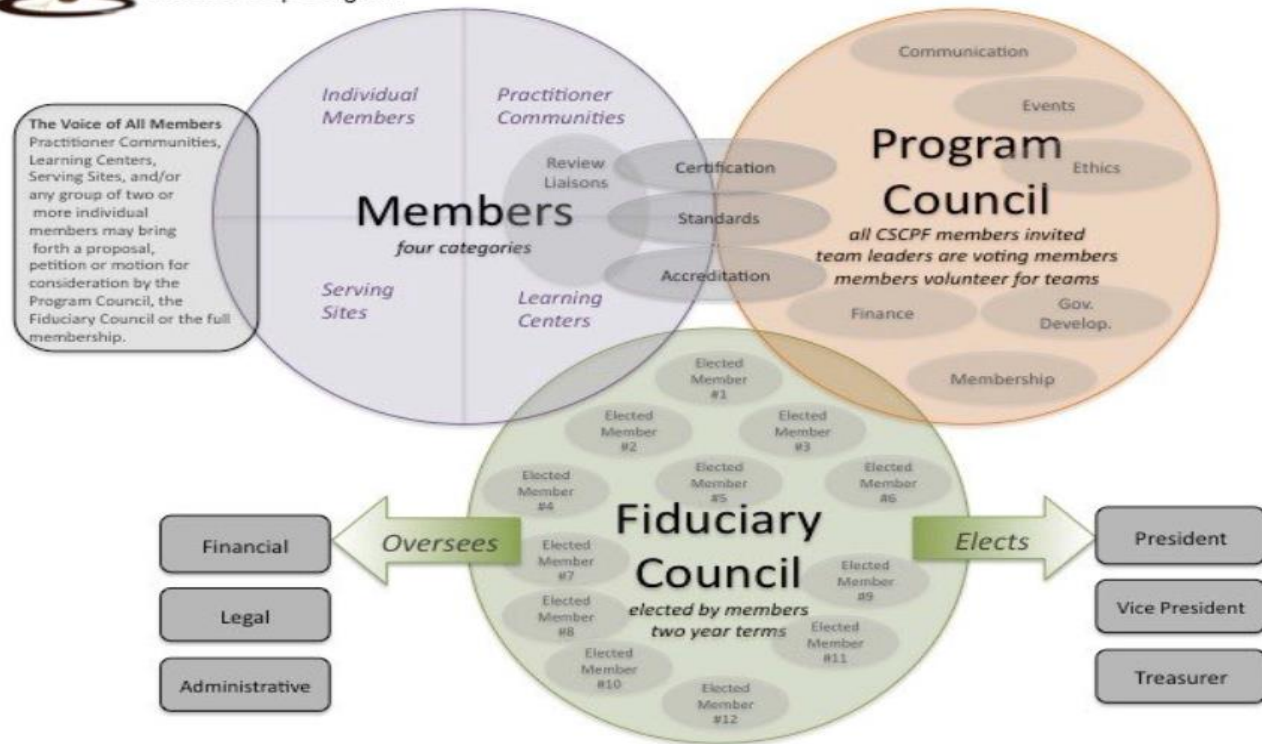
Arboretum International Practitioner Community
Dayton Practitioner Community
Denver Ark Community
Foothills Chaplain Community
Front Range Community
Greater Reading Area Spiritual Care Community
Long Beach Community
Lotus Community
Phoenix Community of Chaplains
Practice Community of the Western Moon
Maharlika Community (PHL)
Parc Chateau Community (PHL)
Masala Supervisor Community
Northwest Arkansas (NWA) Inter-Spiritual Community
Ozarks Practitioner Community
Rocky Mountain Center for Spiritual Caregivers
Southern Arizona Spiritual Care Community
Tree of Life Community
Western Colorado Community



I hold a core value of respect for those I serve and embody by maintaining the highest standards in all aspects of my work.



Center for Spiritual Care and Pastoral Formation Relationship Diagram



RELATIONSHIPS

Members Defined

Individuals: Individuals join CSCP as Individual Members and affiliate with a Practitioner Community.

Practitioner Communities: Autonomous, self-defining communities for support, professional development, certification and accountability.

Learning Centers: CSCP-Accredited educational and formation centers offering CPE and other professional programs, under the direction of a CSCP credentialed Supervisor.

Serving Sites: Clinical venues offering CPE students, interns or residents clinical placement opportunities.

Councils & Teams

The Fiduciary Council is akin to the legal Board of Directors of CSCP. The Fiduciary Council is responsible for the legal, financial, and corporate aspects of CSCP as a 501c3 not for profit organization. According to our Bylaws, the members of the Fiduciary Council are elected for two-year terms by the Individual Members of CSCP. The Fiduciary Council appoints the Officers of CSCP.

The Program Council is responsible for mission, events, programs, certification and accreditation. All CSCP members are invited to participate. Voting members are the Team Leads of the Functional Area Teams. Functional Area Teams are populated by members volunteering to serve.

Functional Area Teams are teams of individuals from the general membership who volunteer to fulfill specific tasks and assume responsibility for core organizational areas. Team Leads are selected by the membership of the team. Members of Practitioner Communities are invited to represent their Community on Functional Area Teams.

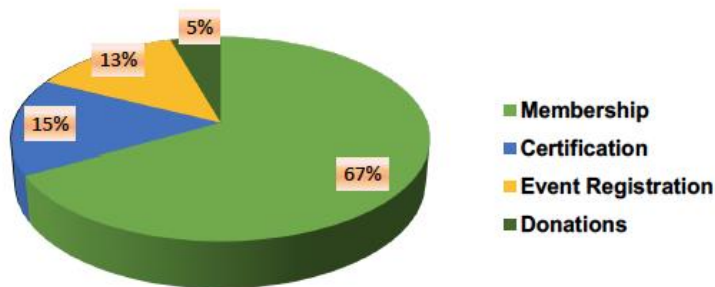
Commissioned Review Liaisons are individuals, who are trained and commissioned by CSCP to ensure organizational standards are met through the review of certification process of members and accreditation process of Learning Centers.

FINANCIAL REPORT

INCOME			EXPENSES		
Membership	\$ 22,104	67%	Contracts	\$13,549	57%
Certification	\$ 5,050	15%	Digital Services	\$ 2,553	11%
Event Registration	\$ 4,376	13%	Other Dues & Fees	\$ 2,300	10%
Donations	\$ 1,490	5%	Insurances	\$ 1,980	8%
Total Income	\$ 33,019		Paypal & Banking	\$ 1,633	7%
			Space Rental	\$ 795	3%
			Travel & Meetings	\$ 766	3%
			Total Expenses	\$23,575	

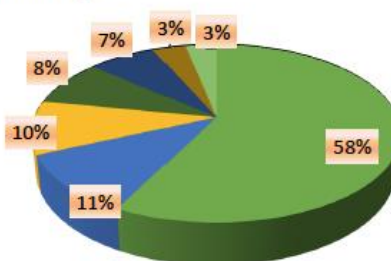
Net Revenue \$9,444

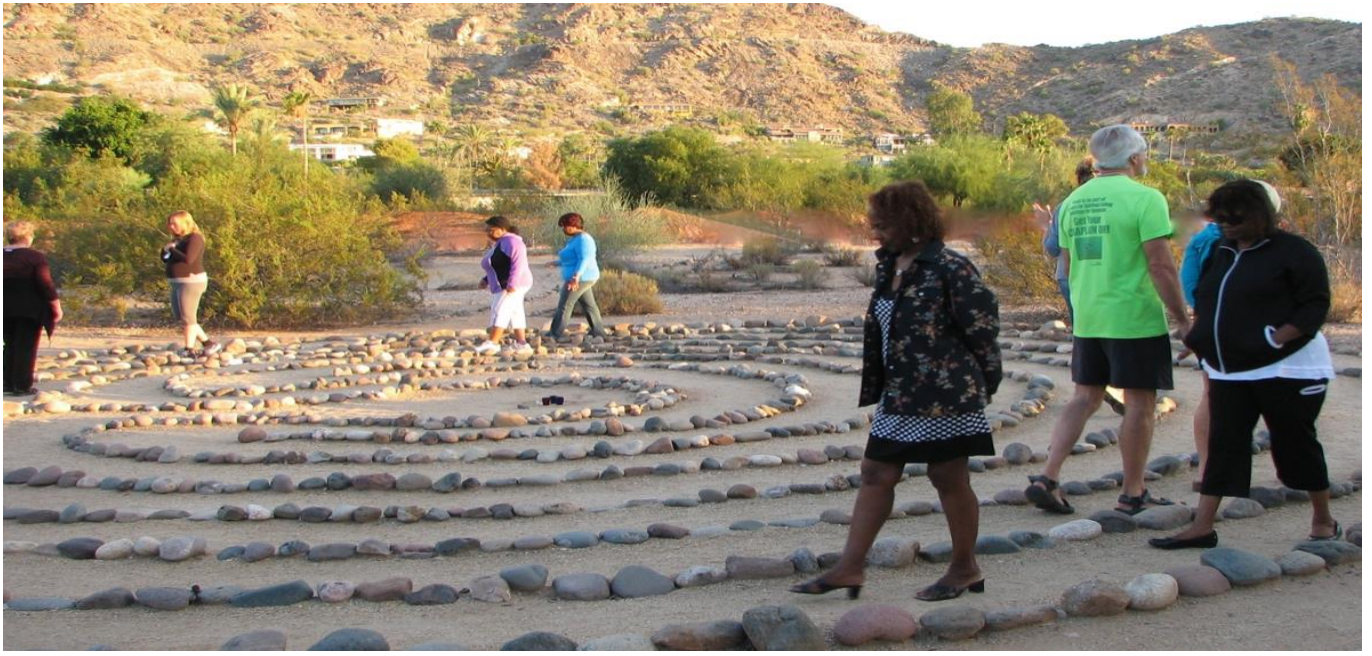
CSCPF 2017 Income



CSCPF 2017 Expenses

- Contracts
- Digital Services
- Other Dues & Fees
- Insurances
- Paypal & Banking
- Space Rental
- Travel & Meetings





CSCPF provides Board Certified Credentialing of Clinical Chaplains, Pastoral Counselors, Spiritual Care Practitioners, Clinical Specialists and CPE Supervisors.

CSCPF Leadership 2017



I seek, first and foremost, to conduct my work in a relational and harmonious manner.



P.O. Box 1872
Graeagle, CA 96103
Phone: (925) 658-5740
Email: CSCPF-Logistics@cscpf.org
www.cscpf.org

I choose to become all that I have always been.