

CENTER for
SPIRITUAL CARE
and PASTORAL
FORMATION

ANNUAL REPORT 2016



www.cscpf.org



CONTENTS

*Welcome –
President’s Message*

The Program Council

The Fiduciary Council + Officers

Communities

Learning Centers

Practitioner Communities

Member Categories

Relationships

Financial Report





WELCOME

Welcome to the Annual Report of the Center for Spiritual Care and Pastoral Formation. Please review the information in this report and witness the journey we have undertaken as a Community over the past twelve months.

GREETING from the CSCPF PRESIDENT

A Vision for CSCPF

In just over two years, CSCPF has confidently emerged as an organization whose members are committed to offering a 21st century response to the spiritual needs of our times. Past and current leadership have helped to pave the way for our organization to develop as a community with an authentic voice. Our growing membership is a testament to the inherent value of our unique approach to formation and certification.

In 2017, there are a few key areas that I feel need particular attention to help our organization grow and thrive:

Practitioner Communities – You are the heart and soul of CSCPF. We seek to strengthen and empower our practitioner communities this year, improving overall support and helping new communities to take root and flourish.

Growth – I would like to see our membership grow this year. Our leadership teams are currently in the exploratory phase of how best to achieve this goal. An increase in membership will also mean added service positions within our organization. We are a participant-based organization that will grow to the extent as we are willing to offer our time and talents!

Connectivity – We are by and large a virtual community and connecting virtually is critical to our success. Leadership is currently working internally and with contractors to achieve the goal of making our website an effective hub for all CSCPF activity.

Support – We're strengthening our overall operational systems and streamlining our processes to best serve our members. This includes ensuring that our financials are well managed and our administration of member services are well established and fully functional.

Let us dream together and bring forth the inspiration and ideas that will help us realize our goals for this year and fuel the vision of our future.

A vision for CSCPF is ultimately a collective one. Let us dream together and bring forth the inspiration and ideas that will help us realize our goals for this year and fuel the vision of our future. CSCPF Leadership will continue to serve this collective vision and remain receptive to suggestions and strategies as they emerge.

May 2017 provide us ample opportunity to shine brightly and further realize our call to spiritual service in the world.

Yours in service,

Rev. Lilliana (Lily) Saganich, President, CSCPF



We are a diverse community who find our common ground in providing high quality spiritual and pastoral care services to those we serve.

Practitioner Communities provide peer support, professional development and lifelong collegial relationship



CSCPF accredits Learning Centers that conduct Clinical Pastoral Education and Formation for those seeking professional certification or enhancement of spiritual care skills.

We recognize the importance of new expressions of care and new voices of spirit in the practice of our profession in the 21st century.



I recognize that remarkable and miraculous transformations happen when I work to create a community of honest engagement that fosters an individual as well as the community's self-awareness.



The Program Council

Functional Area Team Liaisons

Program Council Convener
Eileen Phillips

Accreditation
Roy Sanders

Advancement
Jack Abel

Advocacy
Position Open

Certification & Standards
Rebecca Williams

Communications
John Jeffery

Ethics & Rights
Don Oyao

Events
June (JJ) Pooley

Fiduciary Liaison
Position Open

Finance
Jack Abel

Membership
Wendy Jones

Operations & Legal
Position Open

Spirituality
Position Open

I am dedicated to offering transformative and healing education and spiritual care to practitioners in the world community.



The Fiduciary Council:

The Fiduciary Council was formally elected by the full membership in the Fall of 2016. During the first official meetings of the Council, time was dedicated to reviewing our organizational by-laws, and our processes.

At the November meeting the Council affirmed our organizational (corporate) officers.

*CSCPF Officers**

Lilliana Saganich, *President*

Katie LeCount, *Vice President*

Debra Morwood, *Secretary*

Jack Abel, *Chief Financial Officer*

Brian Whitehorn, *Treasurer*

*As of Dec. 31, 2016

*Fiduciary Council Members**

Elaine Barry

Susan Barton

Paula Belleggie

Doug Boyle

Allison Cornell

Katie LeCount

Liz Munns

Aimee Niles

Don Oyao

Rebecca Williams

Katrina Yap

Alternate Members:

Richard Bristol

Victoria Grasmick

I accept the profound place of trust that my community places in me.



CSCPF COMMUNITIES

Learning Centers

Caron Treatment Centers

SEF: Jack Abel,
Contact: jabel@caron.org

Clinical Pastoral Education Learning Center (CPELC) of Tacoma, WA

SEF: Rev Dr. Bill Greaver,
Contact: www.CPELearning.Center

Merchab Institute

Supervisors: CJ Malone and Michael Benedict
Contact: cjmalone@nw-health.com
SEF: Bill Cox

Pacific Institute for Essential Conversations

Supervisors: John Jeffery and Roy Sanders
Contact: john@pacinstitute.org
SEFs:
Jack Abel (Caron Treatment Center)
William Greaver (Academy of Holistic Theology & Spirituality)
Liz Munns (University of Kansas Medical Center)
Susan Shannon (Pacific Institute for Essential Conversations)

Affiliate Programs:

Academy of Holistic Theology and Spirituality
Caron Treatment Centers
University of Kansas Medical Center – temporary
Manhattan Christian College – Greg Delort, Supervisor

Pomona Valley Hospital Medical Center

Supervisor: Francisco Munoz
Contact: francisco.munoz@pvhmc.org

Rocky Mountain Center for Spiritual Caregivers

Contact: rockymountaincpe@gmail.com

Spiritual Living Center for Education & Training

Contact: cpe@slcet.org

University of Kansas Hospital CPE Center

SEF: Liz Munns
Contact: cpe@kumc.edu

Vanderpol Center for Leadership Pastoral Formation


Supervisor: Dr. Maria Theresita Escandor-Sobremisana, BCCC, BCSCP
Contact: dr.tootsie@vanderpolcenter.org

SEFs:

Katrina Mae A. Yap
Ronnel S. Domingo
Rev. Penelope Beatha D. Caytap, MAT, MDiv

Affiliated Programs:

Center for Pastoral Counseling and Crisis Intervention
Episcopal Diocese of North Central Philippines



I believe the foundational goal of our community is to build respect for the inherent worth, dignity, and equality of every individual in our diverse society.



Practitioner Communities

- Arboretum International Practitioner Community
 - Denver Ark Community
 - East Bay Community
 - Foothills Chaplain Community
 - Front Range Community
- Greater Reading Area Spiritual Care Community
 - Lotus Community
- Practice Community of the Western Moon
 - Masala Supervisor Community
 - Northern Lights CSCPF
- Northwest Arkansas Inter-Spiritual Community
 - Ozarks Practitioner Community
- Rocky Mountain Center for Spiritual Caregivers
- Southern Arizona Spiritual Care Community

Member Categories

Basic/ Intern	42
Certified Clinician	59
CPE Supervisor	14
Learning Center	8
Practitioner Community	14
Serving Site	1
Supervisory Education Fellows	3

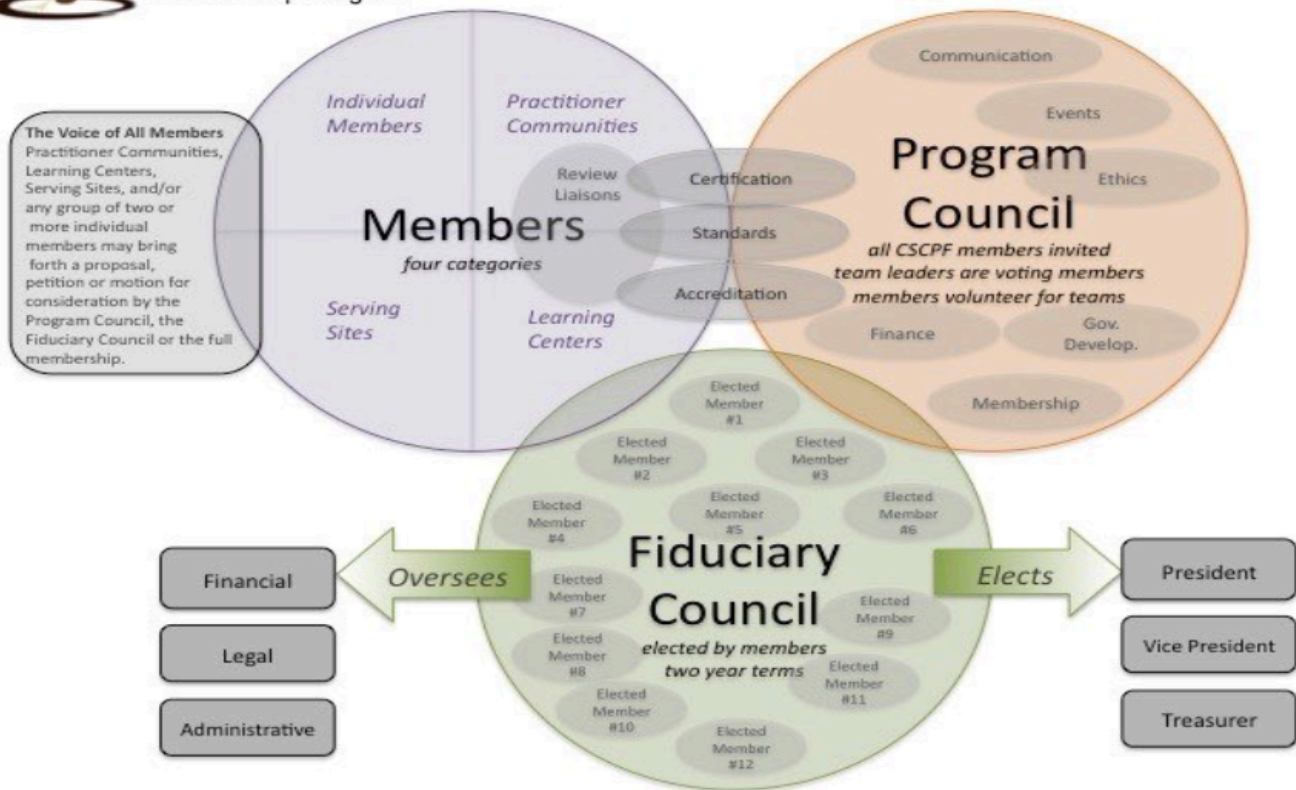


I hold a core value of respect for those I serve and embody by maintaining the highest standards in all aspects of my work.

RELATIONSHIPS



Center for Spiritual Care and Pastoral Formation
Relationship Diagram



Members Defined

Individuals: Individuals join CSCP as Individual Members and affiliate with a Practitioner Community.

Practitioner Communities: Autonomous, self-defining communities for support, professional development, certification and accountability.

Learning Centers: CSCP-Accredited educational and formation centers offering CPE and other professional programs, under the direction of a CSCP credentialed Supervisor.

Serving Sites: Clinical venues offering CPE students, interns or residents clinical placement opportunities.

Councils & Teams

Fiduciary Council

The Fiduciary Council is the legal Board of Directors of CSCP. The Fiduciary Council is responsible for the legal, financial, and corporate aspects of CSCP as a 501(c)(3) not for profit organization. According to our Bylaws, the Fiduciary Council is elected for two-year terms by all of the Individual Members of CSCP. The Fiduciary Council then elects the Officers of CSCP.

Program Council

Responsible for mission, programs, certification and accreditation. All CSCP members are invited to participate. Voting members are the team leaders of the Functional Area Teams. Functional Area Teams are populated by members volunteering to serve.

Functional Area Teams

Teams of individuals from membership who volunteer to fulfill specific tasks and assume responsibility for core organizational areas. Team Liaisons are selected by the membership of the team. Members of Practitioner Communities are invited to represent their Community on Functional Area Teams.

Review Liaisons

Supervisors who are trained and commissioned by CSCP to ensure organizational standards are met through the review of certification process of members and accreditation process of Learning Centers.

FINANCIAL REPORT

Diagram 1: 2016 CSCPF Income, \$25,118

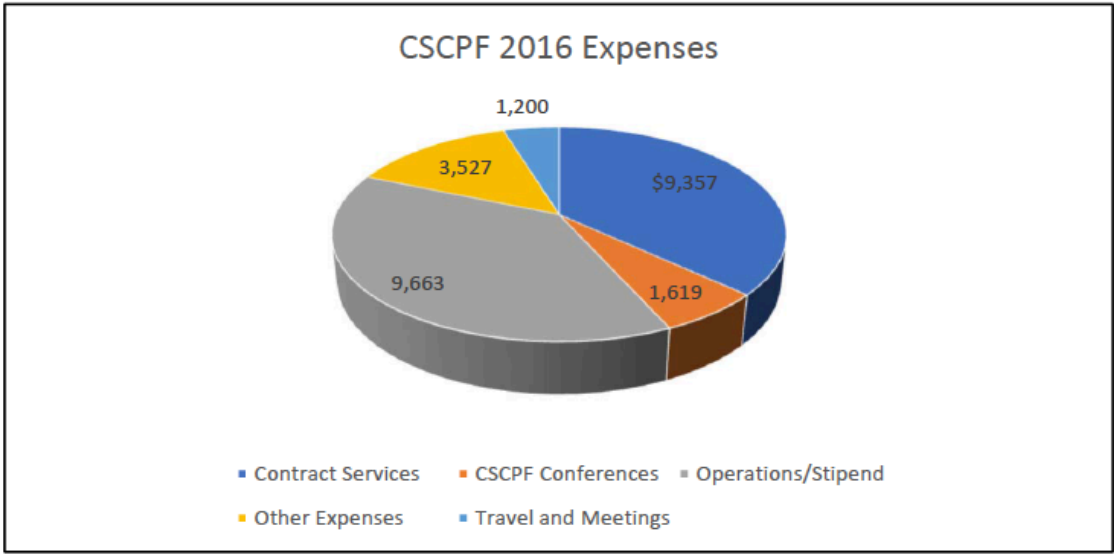
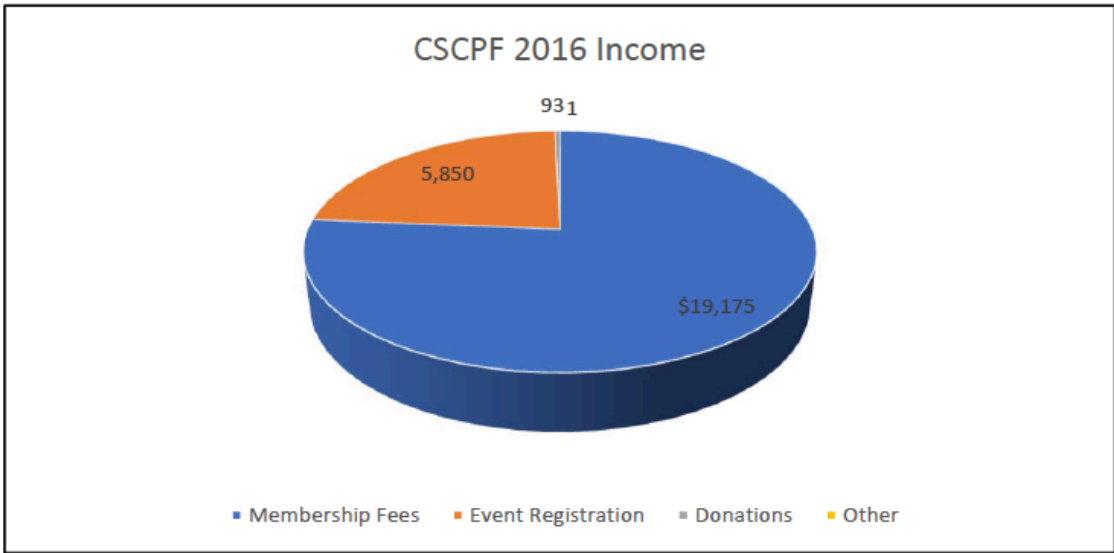
Diagram 2: 2016 CSCPF Operating Expenses, \$25,365

INCOME

Membership Fees	\$19,175	76%
Event Registration	5,850	23%
Donations	93	0%
Other	1	0%
Total Income	\$25,118	100%

EXPENSES

Contract Services	\$9,357	37%
CSCPF Conferences	1,619	6%
Operations/Stipend	9,663	38%
Other Expenses	3,527	14%
Travel and Meetings	1,200	5%
Total Expenses	\$25,365	100%

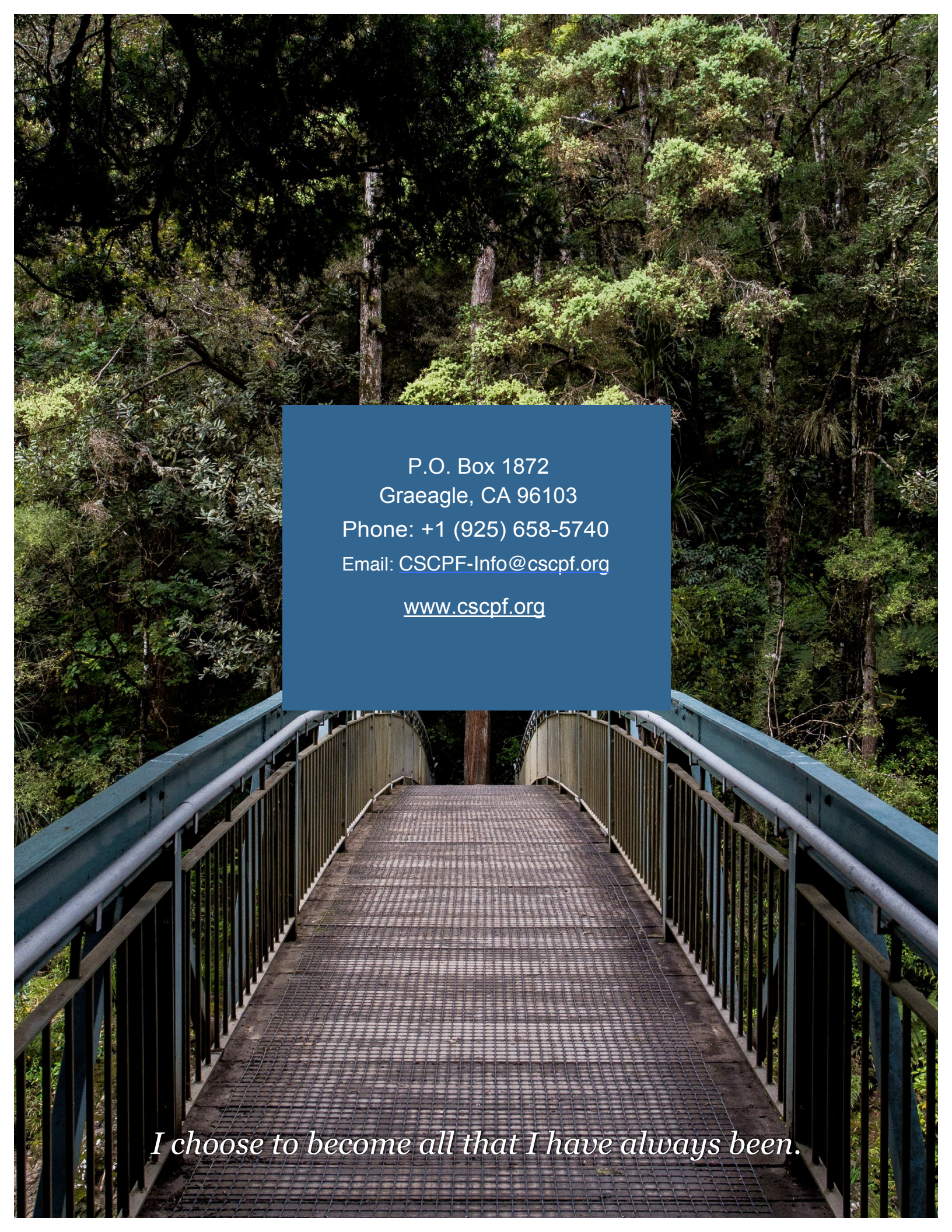




*CSCPF provides
Board Certified
Credentialing of
Chaplains,
Spiritual and
Pastoral
Counselors and
CPE Supervisors*



I seek, first and foremost, to conduct my work in a relational and harmonious manner.



P.O. Box 1872
Graeagle, CA 96103
Phone: +1 (925) 658-5740
Email: CSCPF-Info@cscpf.org
www.cscpf.org

I choose to become all that I have always been.